



# THE BARTRAM A



**3 Beds • 2.5 Baths • 1,884 Heated SF**



# BARTRAM

ELEVATION A

## FIRST FLOOR

1,149 sq. ft.

## SECOND FLOOR

699 sq. ft.

## TOTAL HEATED

1,884 sq. ft.

## FRONT PORCH

215 sq. ft.

## REAR STOOP

16 sq. ft.

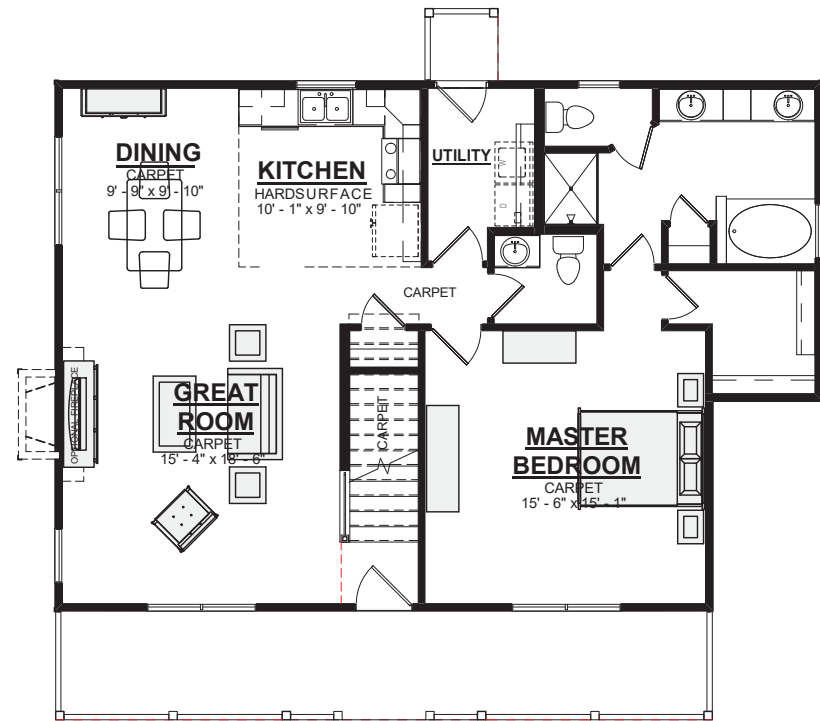
---

## TOTAL UNDER ROOF

2,063 sq. ft.

1-800-AHP-Home  
AmericasHomePlace.com

## 1ST FLOOR



## 2ND FLOOR

