



# THE BRIDGEWATER



**4** Beds • **3.5** Baths • **2,577** Heated SF



# BRIDGEWATER

## TOTAL HEATED

2,577 sq. ft.

## FRONT PORCH

126 sq. ft.

## GARAGE

503 sq. ft.

## REAR STOOP

16 sq. ft.

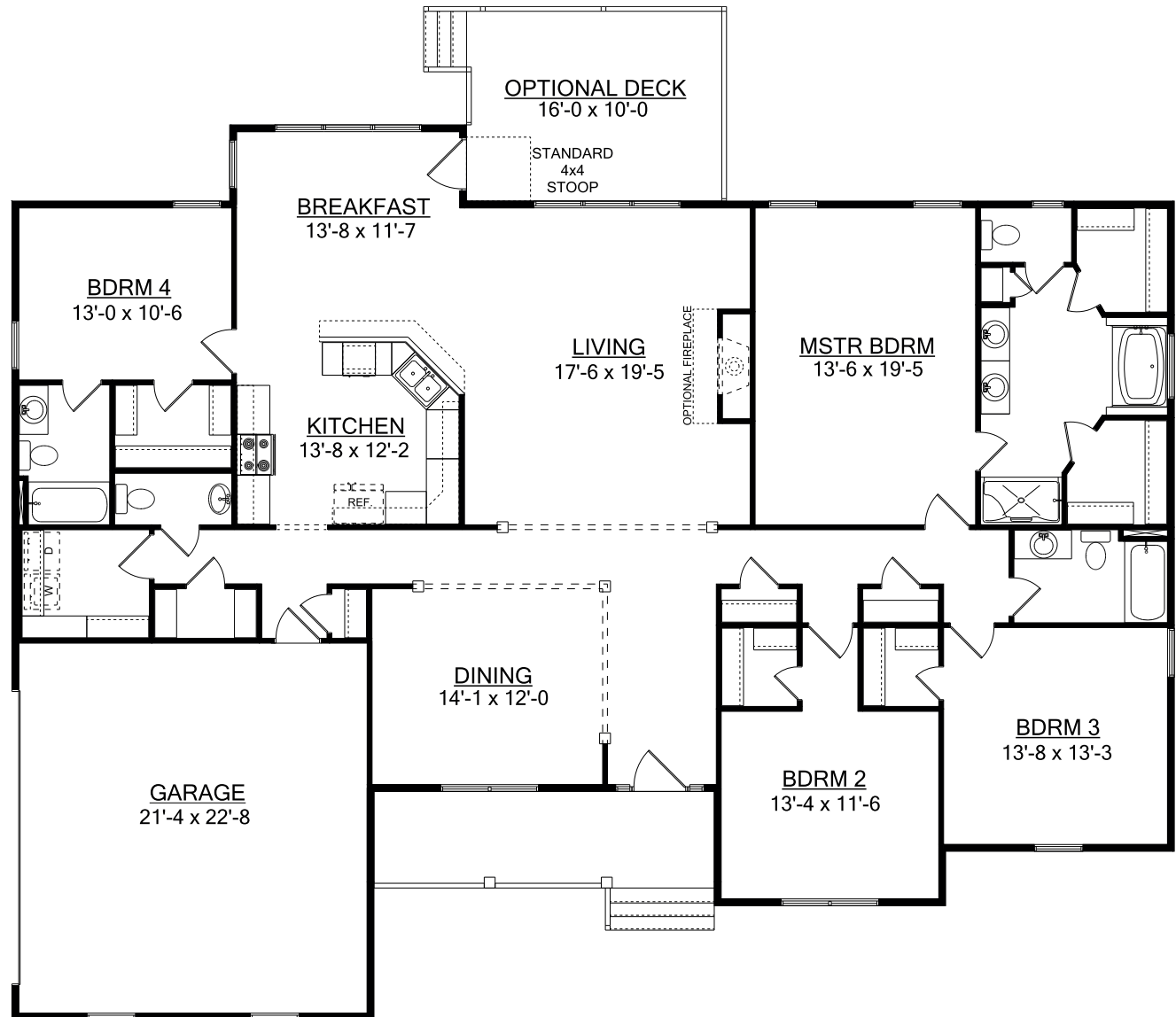
## OPTIONAL REAR DECK

192 sq. ft.

---

## TOTAL UNDER ROOF

3,206 sq. ft.



1-800-AHP-Home  
AmericasHomePlace.com



© 2025 America's Home Place, Inc. Any information shown in this ad is subject to change at anytime. Illustrations show options and upgrades not included in base plan. Specifications vary by location. Home designs represented on this page are property of America's Home Place and are intended for demonstration purposes only. Any unauthorized duplication, copying or reproduction, or any other use, is strictly prohibited. AL #10761 GA #CCCO003514 FL #CR-C1330787 NC #36341 Revised 5/8/25

