



THE MANCHESTER A MODERN FARMHOUSE



3-4 Beds • 3.5 Baths • 3,113 Heated SF



MANCHESTER

ELEVATION A
MODERN FARMHOUSE

TOTAL HEATED

3,113 sq. ft.

FRONT PORCH

256 sq. ft.

GARAGE

645 sq. ft.

REAR STOOP

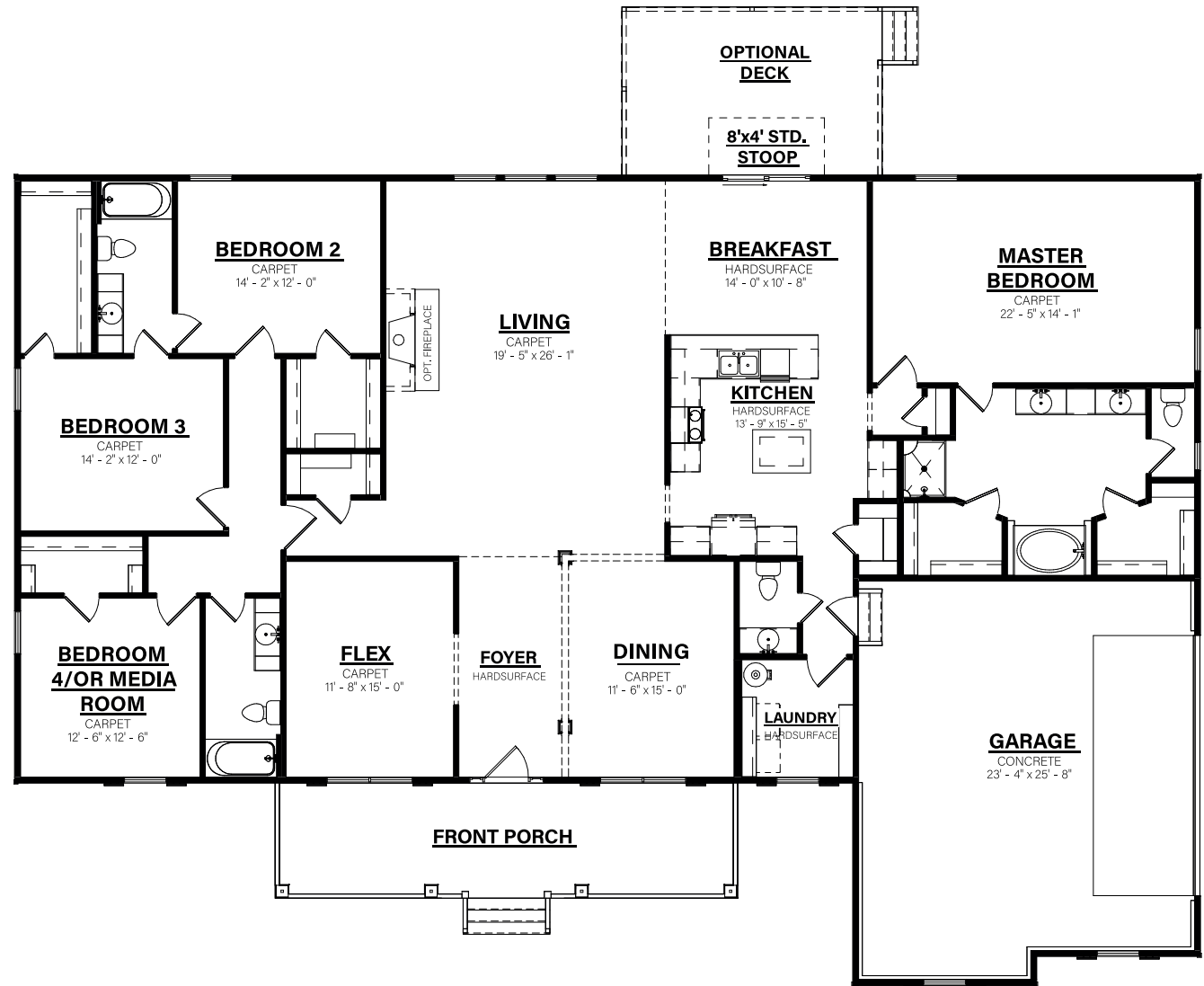
32 sq. ft.

OPTIONAL REAR DECK

210 sq. ft.

TOTAL UNDER ROOF

4,013 sq. ft.



1-800-AHP-Home
AmericasHomePlace.com



© 2025 America's Home Place, Inc. Any information shown in this ad is subject to change at anytime. Illustrations show options and upgrades not included in base plan. Specifications vary by location. Home designs represented on this page are property of America's Home Place and are intended for demonstration purposes only. Any unauthorized duplication, copying or reproduction, or any other use, is strictly prohibited. AL #10761 GA #CCCO003514 FL #CR-C1330787 NC #36341 Revised 5/8/25

