



# THE AUBURN A + BASEMENT STAIRS



**3 Beds • 2 Baths • 1,860 Heated SF**



# AUBURN

ELEVATION A WITH  
BASEMENT STAIRS

## TOTAL HEATED

1,860 sq. ft.

## FRONT PORCH

16 sq. ft.

## GARAGE

571 sq. ft.

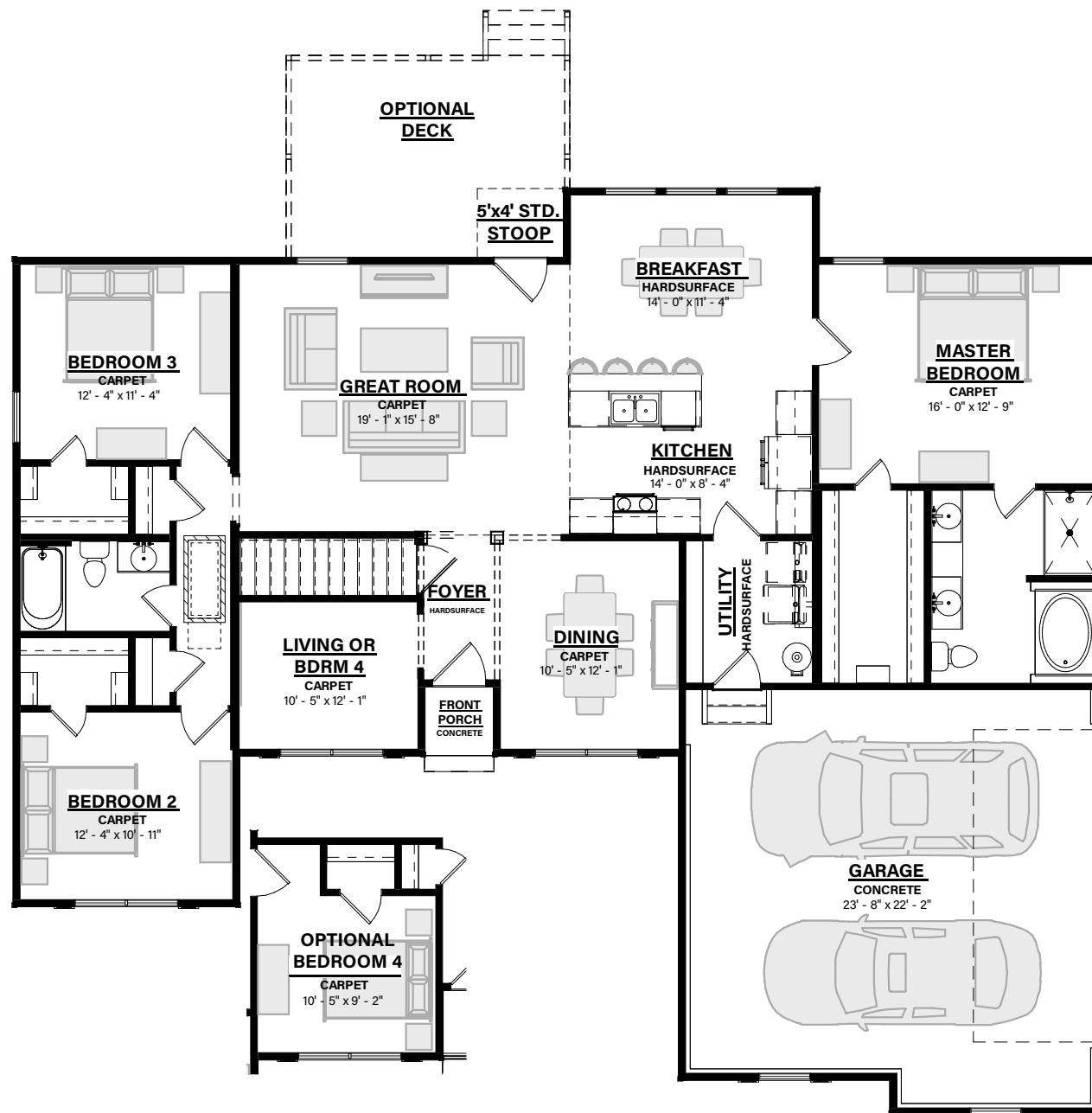
## REAR STOOP

20 sq. ft.

## TOTAL UNDER ROOF

2,446 sq. ft.

1-800-AHP-Home  
AmericasHomePlace.com



© 2025 America's Home Place, Inc. Any information shown in this ad is subject to change at anytime. Illustrations show options and upgrades not included in base plan. Specifications vary by location. Home designs represented on this page are property of America's Home Place and are intended for demonstration purposes only. Any unauthorized duplication, copying or reproduction, or any other use, is strictly prohibited. AL #10761 GA #GCC0003514 FL #CR-C1330787 NC #36341 Revised 5/8/25

