



# THE SPRINGHILL TEXAS



**3 Beds • 2 Baths • 1,801 Heated SF**



# SPRINGHILL

TEXAS

## TOTAL HEATED

1,801 sq. ft.

## FRONT PORCH

132 sq. ft.

## GARAGE

512 sq. ft.

## REAR STOOP

32 sq. ft.

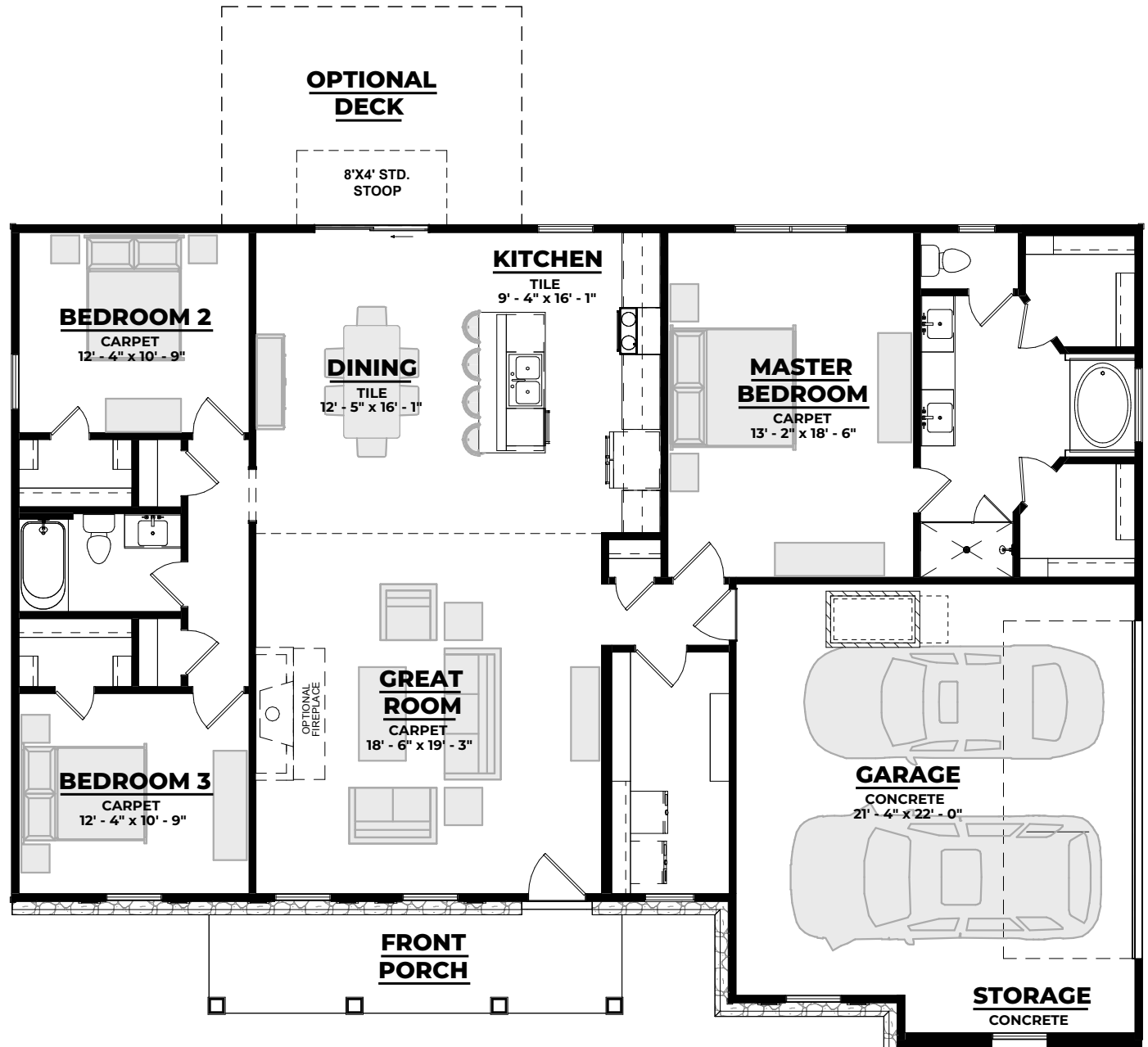
## OPTIONAL PATIO

186 sq. ft.

---

## TOTAL UNDER ROOF

2,445 sq. ft.



1-800-AHP-Home  
AmericasHomePlace.com



© 2026 America's Home Place, Inc. Any information shown in this ad is subject to change at anytime. Illustrations show options and upgrades not included in base plan. Specifications vary by location. Home designs represented on this page are property of America's Home Place and are intended for demonstration purposes only. Any unauthorized duplication, copying or reproduction, or any other use, is strictly prohibited. AL #10761 GA #CCCO003514 FL #CR-C1330787 NC #36341 Revised 6/1/26

